



ARRANGED BY ALAMO WORLD TRAVEL & TOURS



# A Mississippi River Cruise

on the new luxurious 175 passenger "AMERICAN SERENADE"

sailing from New Orleans to Memphis

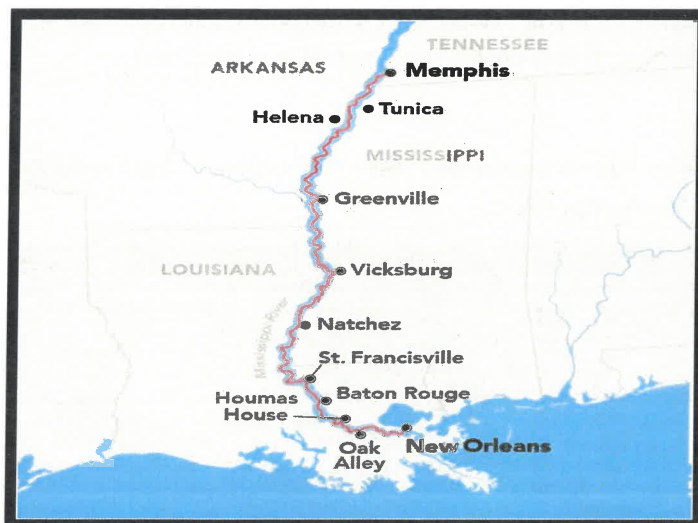
May 21-29, 2024

Includes one night pre-cruise hotel in New Orleans



**Cruising the Mississippi River with American Cruise Lines is an extraordinary journey through history. From Colonial pioneers to entrepreneurs, much of America's story has been forged – or fought – along its length. The Mississippi River is navigable from New**

**Orleans, Louisiana to the Twin Cities of Minnesota, and forms a maritime corridor through the U.S. heartland. American Cruise Lines' modern fleet of brand new contemporary riverboats and traditional paddlewheelers go even further, with cruises exploring the Ohio, Tennessee and Cumberland Rivers, each offering its own unique view of the American South and Midwest. From Mark Twain's hometown of Hannibal, MO, to exploring Civil War history in Vicksburg, to experiencing the heart of American music in Memphis and Nashville while enjoying the exciting flavors of Creole cuisine, the Mississippi River is a premier cruising destination.**



**Presented by  
Joanne Schumacher  
(415) 999-1242**



## Preliminary Itinerary

### **Day 1 -Flight to New Orleans, LA**

Transfer from Lincoln to the airport for your flight to New Orleans. You will be met and transferred to your hotel for an overnight stay in New Orleans.

### **Day 2 - New Orleans**

Transfer to the American Serenade to begin your journey up the Mississippi River. You will have time to explore the French Quarter, with its architectural blend of Spanish, French, Creole, and American styles. The distinctive and romantic character of the area has long inspired writers and artists since the time of Mark Twain, Lafcadio Hern and John James Audubon.

### **3 - Houmas House**

Houmas House Plantation and Gardens is so much more than just a tour of a grand antebellum estate. Experience the southern splendor of "The Sugar Palace" when you step into 16 rooms filled with period antiques and Louisiana artwork.

### **Day 4 - Baton Rouge**

Today you will experience the wonder of Baton Rouge, Louisiana's capital. Known as the Red Stick, Baton Rouge is home to legendary Louisiana Cajun cuisine, fascinating plantation tours, and a variety of attractions. There is everything you would expect to find in a state capital, but with a down-home flavor that is part of its seductive charm. Enjoy a grand tour of one of the most historic and unforgettable cities in the South.

### **Day 5 - St. Francisville**

Some of the most impressive and oft-photographed antebellum houses in the U.S. are in Louisiana. Especially noteworthy are those in the area around St. Francisville, north of Baton Rouge. Among these plantations are Rosedown, Greenwood, Myrtles, and Oakley.

### **Day 6- Natchez, MS**

Perched on a bluff above the Mississippi River, Natchez is a city 300 years in the making. Over 1,000 of its historic structures are listed on the National Register of Historic Places. Upon closer inspection, you will soon discover that Natchez, while indeed a reflection of the past, is also alive in the present, filled with arts, music, culture and commerce.

### **Day 7- Vicksburg, MS**

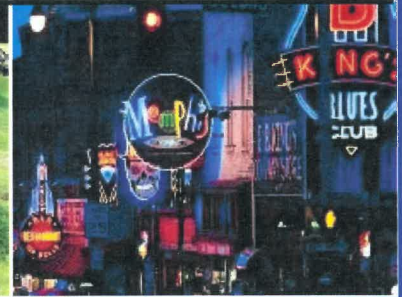
In Vicksburg, you'll find southern hospitality in its most authentic form. It's a city bursting at the seams with history at some of its most poignant turns, art at its most creative angles, food at its finest flavors, and outdoor adventure at its most thrilling. With sweeping views of the Mississippi River, Vicksburg perfectly blends southern culture and heritage along with hallowed stories of Civil War battles.

### **Day 8 - Memphis**

The largest city in Tennessee offers plenty of attractions. Visit Graceland, and then tour the W.C. Handy Museum; Shelby Farms, the largest urban park in the country; or the "twisted" Ornamental Metal Museum. In the heart of "Blues City," you'll find the Peabody Memphis, one of the city's most popular attractions.

### **Day 9- Memphis, TN**

After breakfast, disembark the ship and transfer to the airport for your flight back to Sacramento. Return with memories of your incredible journey up the Mississippi River.





## What Sets American Cruise Lines Apart

Highly personalized service and a relaxed atmosphere prevail onboard all our modern fleet of ships. Our accommodating, all-American crew welcomes you with an unequalled level of attention. Each evening before dinner, enjoy complimentary cocktails and hors d'oeuvres, as you mingle with other passengers to share the adventures of the day. Enjoy, the exquisite cuisine from American Cruise Lines' highly trained chefs. Dining is casual where open seating dining allows you to dine where and when you want.

### Included in cruise package:

- \* Roundtrip airport transfers
- \* Airfare from Sacramento to New Orleans, returning from Memphis
- \* 1 night pre-cruise hotel stay in New Orleans
- \* 7 night cruise on the "American Serenade"
- \* Complimentary Daily shore tours \*\*
- \* Breakfast Room Service
- \* Nightly cocktail hours
- \* Wine and beer with lunch and dinner
- \* Coffee, tea, soft drinks, juices and snacks at all hours
- \* Onboard gratuities to ship staff
- \* All gourmet meals prepared by master chefs with featured regional specialties \*\*\*
- \* Award-winning onboard enrichment - Historians and Riverlorians
- \* Evening entertainment featuring renowned musicians \*\*\*\*

\*\*American Cruises Lines offers the most comprehensive guided shore excursions that bring out the distinct flavor and unique culture of the destinations we visit. We offer over 400 shore excursions which are meticulously planned and supported with personal guides who are well-versed in each region. Guided, small group excursions are available in every port of call and range from museums, historic landmarks, and culturally enriching sites to more active excursions such as hiking, kayaking, and bicycling. With various onshore options, guests can tailor their cruise experiences according to their passions and interests.

\*\*\*Our Team of Master Chefs prepares a traditional American menu with a regional flair that features the freshest local ingredients. Fresh foods are brought aboard daily, some from the farms and vineyards that we visit along the way. Our culinary program is one more way that we connect your onboard experience to the destinations we visit.

\*\*\*\*Let American Cruise Lines guide you through the origins and rich traditions of music on America's legendary rivers and waterways. These shores are home to many celebrated styles of music including Country, Jazz, Blues, and Rock n' Roll. On board and ashore, enjoy music inspired by each unique region and learn its impact on the development of music in America.

### Prices - All Staterooms have Private Balconies

\* Prices reflect a \$600 pp discount which expires July 30, 2023

Category S - Single \$7650 - Deck 2 & 3- 250 square feet - Limited in number

Category AAR - \$6515 pp double - Main Deck - Mid-ship - 275 square feet

Category AAC - \$7295 pp double - 2nd entire deck - 316 square feet

Caterogy AAM - \$7735 pp double - 3rd entire deck - 350 square feet

Category VS - \$8625 pp double - Suite - 4th deck mid-ship - 405 square feet

## **TOUR CONDITIONS Questions - call 800 848-8747**

1. A deposit of \$600 pp is required to reserve a stateroom on this cruise.
2. Deposit includes a \$100 pp non-refundable group management fee
3. Changes in itinerary may be made as deemed necessary by the cruise line or tour escort.
4. There will be no refunds for unused portion because of early departure from the tour. (Including transfers)
5. Deviation request subject to a minimum of \$100 per person nonrefundable service fee.
6. Price is based upon 10 paying people, but may operate with fewer people at an adjusted cost.
8. Final payment date is Feb. 1, 2024
9. Prices are based on current airfare and taxes as of 4/24/23 and subject to change

Make checks payable to: **ALAMO WORLD TRAVEL & TOURS** (please mention trip & dates on check)

Mail payments to: **ALAMO WORLD TRAVEL, 3201 DANVILLE BLVD. # 255, ALAMO, CA. 94507**

SIGNATURE  
TRAVEL NETWORK



**CANCELLATION POLICY - ALL CANCELLATIONS MUST BE RECEIVED IN WRITING. A \$350 CANCELLATION FEE IS INCURRED AFTER DEPOSIT IS MADE UNLESS INSURANCE IS PURCHASED. AFTER FINAL PAYMENT IS MADE, NO REFUNDS, EXCEPT THROUGH INSURANCE CLAIM. Group insurance available at \$575 PP for all categories except VS which is \$650 pp. Premium must be paid with deposit and is non-refundable. Insurance is for medical issues only NOT cancel for any reason. Final determination of claim is made by Travelex and its policies.**

**DISCLAIMER:** All travel events and other activities sponsored by LINCOLN HILLS TRAVEL GROUP are for the convenience and pleasure of the members and their guests who desire to participate. LINCOLN HILLS TRAVEL GROUP does not assume any responsibility for the well-being or safety of the participants or passengers or their property, or any damages whatsoever, in any manner pertaining to said travel activities. Any other disclosures or non-responsibility provisions contained herein shall not in any way incur any liability attaching to LINCOLN HILLS TRAVEL GROUP thereof. LINCOLN HILLS TRAVEL GROUP acts only in the capacity of collecting and forwarding funds for travel packages to Alamo World Travel & Tours who are registered in compliance with the California Seller of Travel Act with the State of California Attorney General's office. Seller of Travel #2008416-10.

**CONSUMER DISCLOSURE NOTICE and RESPONSIBILITY:** ALAMO WORLD TRAVEL & TOURS & AMERICAN CRUISE LINES are acting as a mere agent in selling travel-related services, or in accepting reservations or booking for services that are not directly supplied by this travel agency (such as air and ground transportation, hotel accommodations, meals, tours, cruises, etc.). This agency, therefore, shall not be responsible for breach of contract or any intentional or careless actions or omissions on part of such suppliers, which result in any loss, damage, delay or injury to you or your travel companions or group members. Unless the term "guaranteed" is specifically stated in writing on your tickets, invoice, or reservation itinerary, we do not guarantee any of such suppliers' rates, bookings, reservations, connections, scheduling, or handling personal effects. Travel agent shall not be responsible for any injuries, damages, or losses caused to any traveler in connection with terrorist activities, social or labor unrest, mechanical or construction failures or difficulties, diseases, local laws, climatic conditions, abnormal conditions or developments, or any other actions, omissions, or conditions outside the travel agent's control. ALAMO WORLD TRAVEL & TOURS INC. and AMERICAN CRUISE LINES, whose vouchers are used, and their respective agent for the passenger in all matters pertaining to hotel accommodations, sight-seeing tours and transportation, hold themselves free of responsibility for any damages occasioned from any cause whatsoever. ALAMO WORLD TRAVEL & TOURS INC. and AMERICAN CRUISE LINES will not be responsible for any damage or inconvenience caused by late arrivals, departures, and change of schedule or other conditions nor will they be responsible for any act, omission or event during the time the passenger is not on board their plane or conveyance. The passenger contract in use by the airline concerned, when issued, shall constitute the sole contract between the airline and the purchaser of these tours, is subject to change and is based on exchange rates and tariffs in effect at time of departure. ALAMO WORLD TRAVEL & TOURS is registered in compliance with the California Attorney General's office. cst # 2008416-10.

ALAMO WORLD TRAVEL (800) 848-8747 [www.alamoworld.com](http://www.alamoworld.com)

**Mississippi River Cruise  
Lincoln Hills Travel Group  
May 21-29, 2024**

**Final payment due: Feb. 1, 2024**

**Make checks payable to: Alamo World Travel & Tours  
Mail with application to: ALAMO WORLD TRAVEL  
3201 DANVILLE BLVD. #255, ALAMO, CA 94507  
(800) 848-8747**

Enclosed please find a check in the amount of \$ \_\_\_\_\_ for \_\_\_\_\_ person (\$600 pp required).

Please add \_\_\_\_\_ insurance for \_\_\_\_\_ people (\$575 p/p dbl. all categories except VS at \$650 pp.)

### **COMPLETE THE FOLLOWING WITH NAMES AS SHOWN ON GOVT. ISSUED ID**

☐ Mr. ☐ Mrs. ☐ Miss

LEGAL NAME: \_\_\_\_\_

NAME/NICK NAME FOR BADGE: \_\_\_\_\_

ADDRESS: \_\_\_\_\_

CITY \_\_\_\_\_ STATE \_\_\_\_\_ ZIP \_\_\_\_\_

Phone: (\_\_\_\_) \_\_\_\_\_

Age & Birthdate: \_\_\_\_\_

E-Mail Address: \_\_\_\_\_

Emergency Contact Person: \_\_\_\_\_

Emergency Phone: (\_\_\_\_) \_\_\_\_\_

Special Diet / Mobility Concerns: \_\_\_\_\_

☐ Mr. ☐ Mrs. ☐ Miss

LEGAL NAME: \_\_\_\_\_

NAME/NICK NAME FOR BADGE: \_\_\_\_\_

ADDRESS: \_\_\_\_\_

CITY \_\_\_\_\_ STATE \_\_\_\_\_ ZIP \_\_\_\_\_

Phone: (\_\_\_\_) \_\_\_\_\_

Age & Birthdate: \_\_\_\_\_

E-Mail Address: \_\_\_\_\_

Emergency Contact Person: \_\_\_\_\_

Emergency Phone: (\_\_\_\_) \_\_\_\_\_

Special Diet / Mobility Concerns: \_\_\_\_\_

**BEDDING:** ☐ TWINS ☐ QUEEN

☐ SINGLE STATEROOM - CATEGORY \$ \$7650

☐ STATEROOM CATEGORY  
AAR: \$6515 PP DBL.

☐ STATEROOM CATEGORY  
AAC: \$7295 PP DBL.

☐ CATEGORY AAM \$7735 PP DBL

☐ CATEGORY VS: \$8625 PP DBL

**We believe that your upcoming trip is a significant investment.** For your convenience, Alamo World Travel offers a travel protection plan through Travelex Insurance Services. For more information and rates, please review the product flyer enclosed. If you would like to enroll please fill out the Travelex Enrollment form provided.

Travelex Insurance Services, Inc. CA Agency License #0D10209. Travel Insurance is underwritten by Berkshire Hathaway Specialty Insurance Company; NAIC #22276. X41

☐ I do not want group insurance. ☐ Yes, include group insurance with my payment. (see prices above)

**PLEASE COMPLETE THE FOLLOWING IF PAYING BY CREDIT CARD** - In lieu of my credit card imprint, I hereby authorize Alamo World Travel & Tours to charge my ☐ Visa ☐ MasterCard in the amount of \$ \_\_\_\_\_ for payment of travel.

Name as it appears on credit card \_\_\_\_\_ Card # \_\_\_\_\_

Exp. date \_\_\_\_/\_\_\_\_ Authorization code on back of card (last 3 or 4 digits displayed in signature area) \_\_\_\_\_

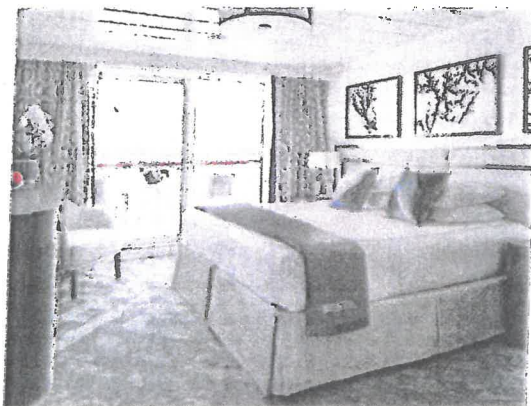
By my signature, I acknowledge and agree to the charges described hereon.

Signed \_\_\_\_\_ Date \_\_\_\_\_





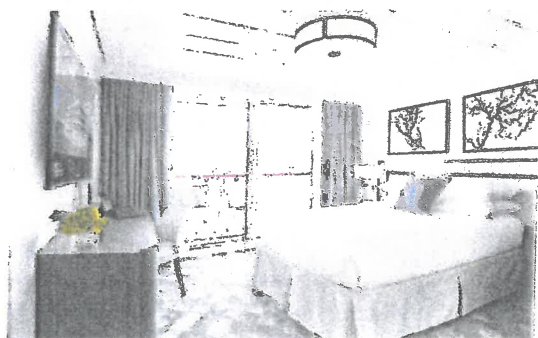
**AAM** ★ Located on the third deck, these spacious staterooms feature commanding views of the passing river landscapes. At 350 sq. ft., there is plenty of room to enjoy the tasteful comfort of your surroundings. These staterooms have all the comforts of a fine hotel and feature floor-to-ceiling sliding glass doors with a private balcony to offer panoramic views from every angle.



**AAC** ★ AAC staterooms are conveniently located on the second deck and offer all of the comforts of a fine hotel. Complete with a private balcony and floor-to-ceiling sliding glass doors, these staterooms provide spectacular views of the surrounding landscape. At 316 sq. ft., these staterooms also offer a sitting area, desk and full-size bathrooms.



**AAR** ★ AAR staterooms on the main deck offer complete comfort with approximately 275 sq. ft. of living space. Enjoy a full-size bathroom, large picture window, and door leading out to a furnished private balcony. These staterooms also feature a large sitting area, ideal for getting together with friends.



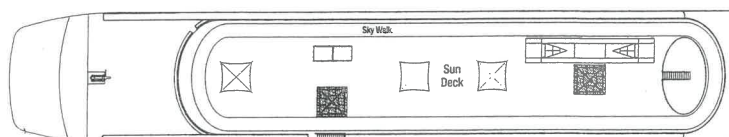
**Single** ★ Perfect for the solo traveler, our Single staterooms offer all of the amenities you expect from a fine hotel. At 250 sq. ft., these staterooms have spacious bathrooms and large sliding glass doors that lead to a private balcony.

# American Melody American Symphony American Serenade

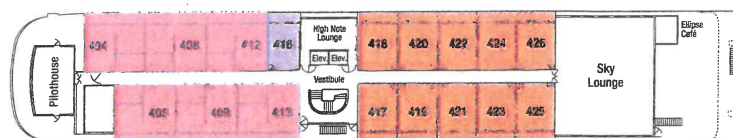
Accommodating 175 Guests  
Cruising the Mississippi River Region



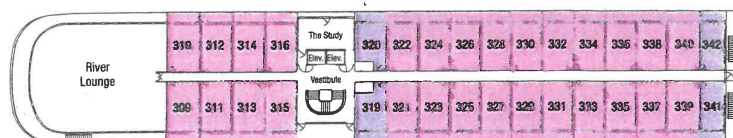
5<sup>th</sup> Deck



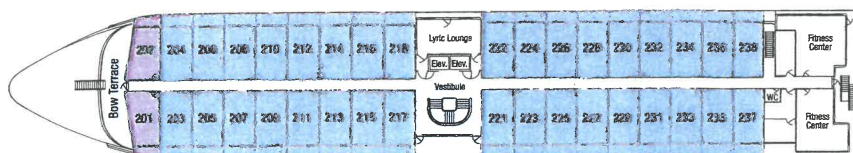
4<sup>th</sup> Deck



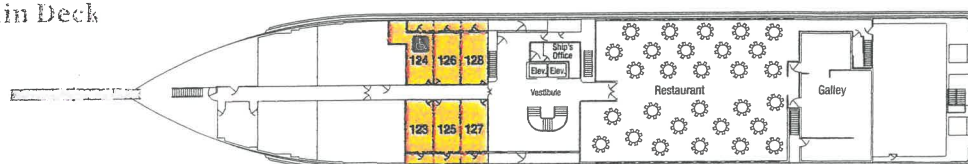
3<sup>rd</sup> Deck



2<sup>nd</sup> Deck



Main Deck



## Stateroom Categories

	Grand Suite (Private Balcony)		AAC (Private Balcony)
	Veranda Suite (Private Balcony)		AAR (Private Balcony)
	AAM (Private Balcony)		Single (Private Balcony)